**Shop 3/52 President Ave CARINGBAH NSW****5** **FOR LEASE**

This modern shop in a secure building is an opportunity not to be missed. Located in the heart of Caringbah close to McDonalds, Woolworths and the upcoming new Coles development.

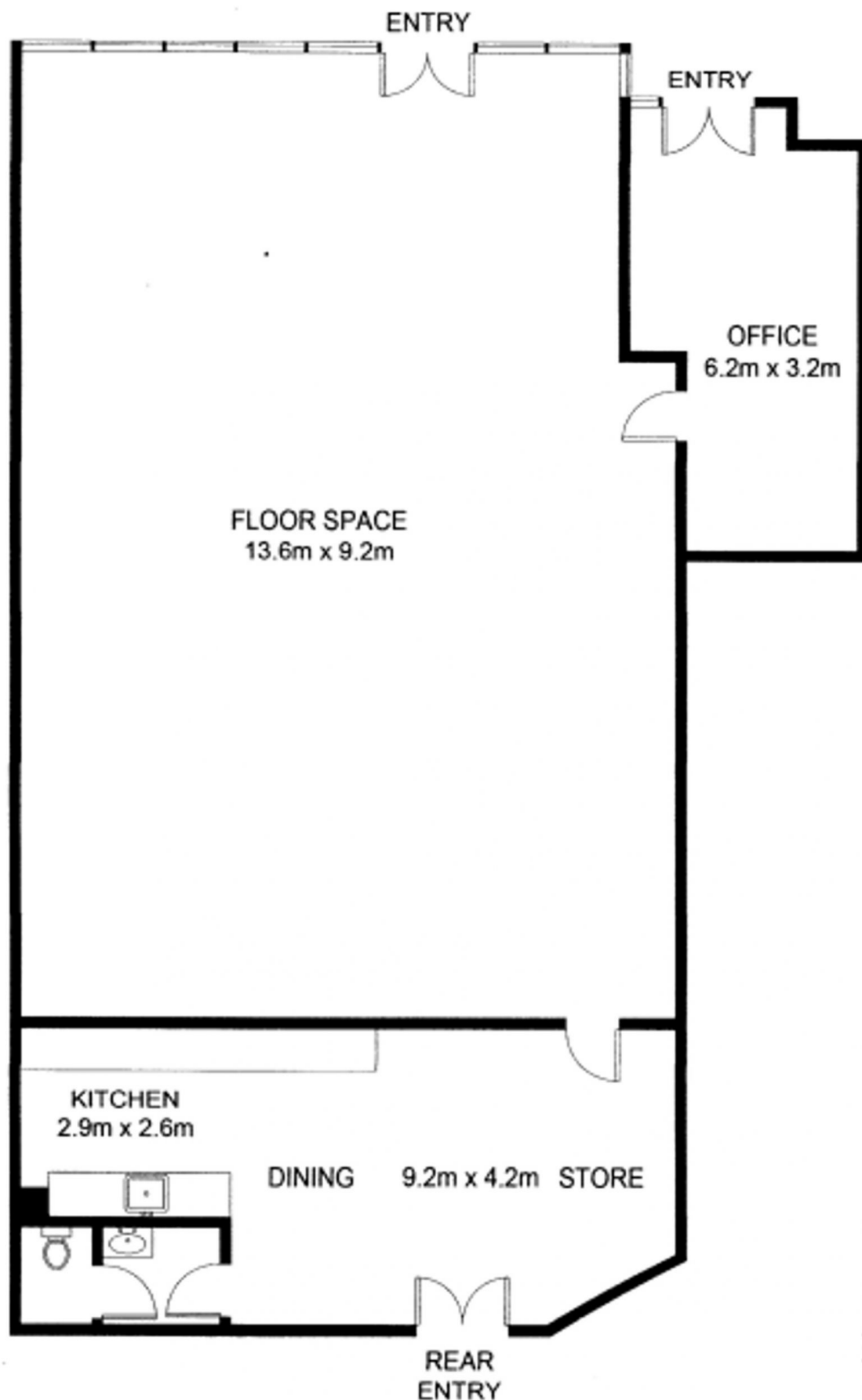
- ? High traffic area with both pedestrian and vehicle passing
- ? Great signage / advertisement opportunities
- ? Rear access available which is great for deliveries etc
- ? With 5 allocated undercover car spaces

|                      |   |
|----------------------|---|
| <b>Type</b>          | : Retail  |
| <b>Price</b>         | : For Lease   |
| <b>Building Size</b> | : 176 sqm   |
| <b>View</b>          | : <a href="https://www.cooperwilson.com.au/lease/nsw/sutherland/caringbah/commercial/rear/8037778">https://www.cooperwilson.com.au/lease/nsw/sutherland/caringbah/commercial/rear/8037778</a> |

[For full version visit the website](https://www.cooperwilson.com.au)

# Shop 3/ 52 President Ave CARINGBAH

**COOPER WILSON**  
COMMERCIAL PROPERTY



*DISCLAIMER: Plans shown are for presentation purposes only and are not part of any legal document. All measurements and figures are approximate*